



Innovation
that excites

NISSAN
LEAF

Zero Emission



[Contents](#) | [Exterior design](#) | [Interior design](#) | [Technology & Performance](#) | [Style & Accessories](#) | [Technical Specifications](#) | [Price List](#)

[Print](#) | [Close](#)

REQUEST A TEST DRIVE



CITIZENS OF THE ROAD, **UNITE.**

Be a part of the electric revolution: join over 200,000 100% electric Nissan LEAF owners already making the most of zero emissions driving across the globe in the world's best selling Electric Vehicle. Now built in Britain, we present the New 100% electric Nissan LEAF - the best just got better.

LOOK & FEEL

EXTERIOR DESIGN	05
INTERIOR DESIGN	10

TECHNOLOGY & PERFORMANCE

DASHBOARD TECHNOLOGY	14
NISSANCONNECT EV	14
CHARGING LEAF	18
SAFETY	20

STYLE & ACCESSORIES

ACCESSORIES	22
COLOURS/TRIMS	24
TECHNICAL SPECIFICATION	26
YOU+ NISSAN	28

**HOW SMART IS THE
NISSAN LEAF?
DISCOVER FOR YOURSELF.**

Discover the smart fluidity of the Nissan LEAF. Charge it at home or on the go, control it with your smart phone and delight in uncompromising comfort, outstanding technology and unexpected power of a genuine game-changer.
The future just got real.

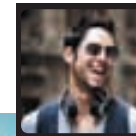




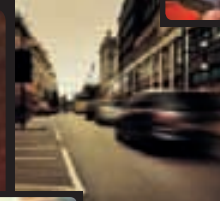
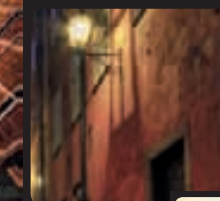
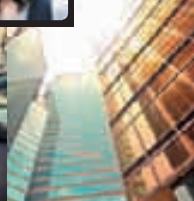
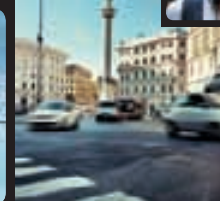
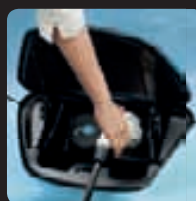
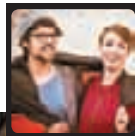
www.nissan-leaf.co.uk

6
EXTERIOR DESIGN

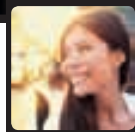
"I bought my LEAF as a second car. I now drive it 96% of the time."



"I love the LEAF because it's the cheapest car to run of any car I've ever owned."



"NissanConnect EV is very cool. I warm up my LEAF every morning without leaving the breakfast table!"



SPREAD THE WORD

IT'S SURPRISING what you can achieve in a car that's so clean it doesn't even have an exhaust pipe.

7
LOOK & FEEL

DRIVE FOR CHANGE

IT MAY LOOK FAMILIAR, but it's revolutionary inside. Packed with innovation, the Nissan LEAF delivers a range of 155 miles (NEDC cycle). An all-electric, hi-tech eco-warrior right down to the tip of its aerodynamic nose, the 100% electric Nissan LEAF is the purist's choice.

"I have no reason to know what the price of a litre of petrol is anymore."



"The car is saving me loads of money on petrol and maintenance, and electric costs are minimal."



"I knew the LEAF would be energy efficient; I didn't expect it to be so much fun to drive."



www.nissan-leaf.co.uk



8
EXTERIOR DESIGN

9
LOOK & FEEL

[Contents](#) | [Exterior design](#) | [Interior design](#) | [Technology & Performance](#) | [Style & Accessories](#) | [Technical Specifications](#) | [Price List](#)

[Print](#) | [Close](#)

[Page 1](#) | [Page 2](#) | [Page 3](#)

[REQUEST A TEST DRIVE](#)



CHECK IN

The Nissan LEAF's 370L boot space is among the top in its category. Even with the BOSE Sound System on the top of the range LEAF Tekna, you still have an impressive boot capacity of 355L.

LOAD UP

If you need more space, the rear seats are fully folding.



12



ATTRACT THE CROWD

A FULL 5-SEATER offering adjustable height in the front and plenty of room in the back, Nissan LEAF is a real crowd-pleaser. Nissan LEAF also offers you the option of heated seats and steering wheel, keeping you warm in an energy efficient way. Choose from a full leather trim or a planet-loving bio-fabric made from sugar cane.

INTERIOR DESIGN

[Contents](#) | [Exterior design](#) | [Interior design](#) | [Technology & Performance](#) | [Style & Accessories](#) | [Technical Specifications](#) | [Price List](#)

[Print](#) | [Close](#)

REQUEST A TEST DRIVE

COOL TECH TOOLS

YOUR DIGITAL DASHBOARD. Login to Nissan LEAF's control panel, dominated by beautiful blue-lit dials and a clear digital dash display. The elegant centre console with a 7" LCD screen completes the look of the future.



EV ANALYTICS

The combimeter helps to maximise your range by instantly displaying energy consumption and regeneration, state of charge, remaining energy, capacity levels and distance-to-empty in an easy to read format.

B-MODE DRIVING

Flick the mouse into B-mode and the hi-tech regenerative braking system will increase the energy recycled back into the power supply when you brake or decelerate.

360° VISION

Enjoy a crystal-clear view with 360° Around View Monitor. Four wide-angled cameras offer a front, rear and/or side view as well as a bird's eye view for the ultimate ease of parking.

ECO-MODE

Switch to Eco mode to save even more energy and improve your range by as much as 10% - particularly if you're driving through town in traffic.

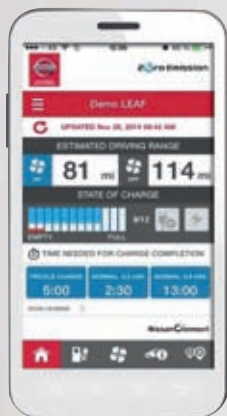


DASHBOARD TECHNOLOGY

NISSANCONNECT EV

TALK TO YOUR LEAF IT LISTENS. NissanConnect EV allows you to keep in touch with your LEAF remotely and offers the functionality to start charging or turn the heat on remotely.

You can customise your settings to receive alerts to update you when it finishes charging. You can also log on to NissanConnect EV on your laptop, where you'll discover more ways to make driving electric more convenient and fun. And don't forget to check your phone – that might be your LEAF calling.



FROM YOUR SMARTPHONE. Using the NissanConnect EV app, you can connect to your LEAF allowing you to manage your charging, view your driving range and even activate climate control. You can also set it up to provide you with various alerts and updates.



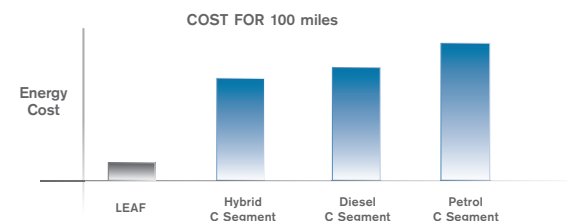
FROM YOUR COMPUTER. In addition to the features available via the Smartphone app, you can log into your NissanConnect EV account online to view your driving history, plan your route and even see how your driving efficiency ranks among other LEAF owners.



TAKE CHARGE NOW'S THE TIME

CHOOSE YOUR STATION. Stop for a quick charge en route, top up at home or plug in at work and take advantage of the 155 miles NEDC driving range the Nissan LEAF offers you.

LEAF offers an extremely competitive cost of ownership package.



www.nissan-leaf.co.uk



1. QUICK CHARGE STATION

30 MINS. Go from 0-80% in approximately half an hour: rapid charging is the fastest battery boost available, making life easier and longer trips possible. The national network of rapid chargers is expanding all the time, for example at Nissan dealers and motorway service stations.



2. HOME CHARGING UNIT

STARTING FROM 4 HOURS.

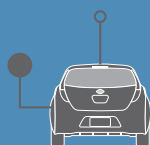
Battery	24 kWh	30 kWh
3.3 kw on-board charger	7 hours	9.5 hours
6.6 kw on board charger*	4 hours	5.5 hours

*optional, 32A charging times shown

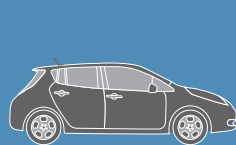


3. CABLE + DOMESTIC PLUG

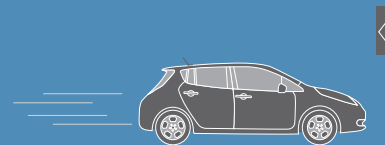
12-15 HOURS. Use your Nissan EVSE cable to charge your LEAF where you like - at public charging stations, at work or at home (so long as the domestic socket is on a professionally installed dedicated circuit). Providing 10A power, the 24kWh battery will charge from empty to full in approximately 12 hours or 15 hours with the 30kWh battery.



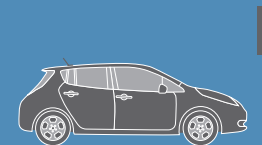
Wake up to a full 'tank'. All charged up and remotely pre-heated or cooled, LEAF is ready for action.



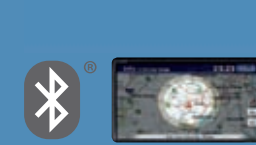
Whoosh! Nissan LEAF has no gears and has 100% torque available straightaway for a smooth, responsive and near-silent getaway.



Enjoy zero emissions driving for less with zero Vehicle Excise Duty, zero London Congestion Charge and 5% Benefit-in-Kind (until March 2016).



Thanks to its regenerative brakes, Nissan LEAF charges everytime you slow down. Red lights are your new best friend.



Take that important call with Bluetooth®, then do those errands. The range indicator shows how many miles you've got left and nearby charging stations.



Just another day of zero emissions driving with LEAF. No petrol, no emissions. Back home, time to charge up during off-peak hours while sleeping.



AIRBAGS. Nissan's Advanced Airbag System includes dual-stage front airbags with seat belt sensors, front seat-mounted side impact airbags and roof-mounted curtain side impact airbags for front and rear seats.

ARRIVE SAFELY

A PROTECTED ENVIRONMENT.
Naturally, Nissan LEAF is equipped with all the latest safety and security equipment.



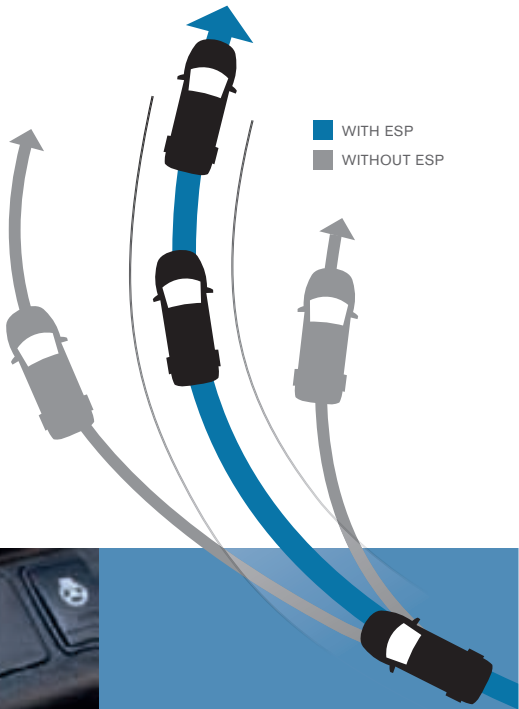
AVM. The 360° Around View Monitor helps you park safely and easily. Thanks to 4 wide-angle cameras, you can view your surroundings from a variety of angles including front & side, back & side and from above.



LED LIGHTS.
The xenon-like performance of Nissan LEAF's LED lights are designed to brighten up your darkest moments while using half the energy of halogens.



ESP. The Electronic Stability Program keeps you in control. It senses the car's handling limits and, if needs be, reduces engine power or applies select brakes to avoid wheel spin.



REASSURING ESP: Electronic Stability Program turns last-minute lane changes and rapid stops into a smoother operation and keeps you safer on your desired trajectory.



ADD A PERSONAL TOUCH

NISSAN GENUINE ACCESSORIES. From chrome accents to illuminations, clever organisers to wow-factor wheels - customise your LEAF to suit you. .



- 1) Wind deflectors
- 2) Chrome mirror caps (over the existing mirror housings)
- 3) Chrome strip door sills
- 4) Chrome foglamp rings
- 5-7) Floor mats, 4pc



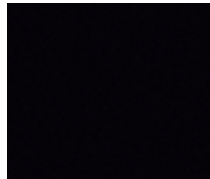
- 8) Illuminated entry guard
- 9) Charging port lid cover

- 10) Cargo organizer
- 11) Centre console inserts

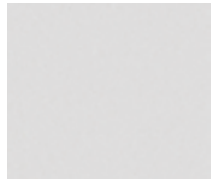
- 12) 16" alloy wheel - ELECTRON
- 13) Soft trunkliner - compatible for LEAF with and without BOSE Sound System.

COLOURS

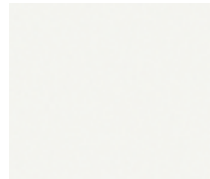
COLOUR YOUR ENERGY



PEARL BLACK - **Z11**



BLADE SILVER - **KY0**



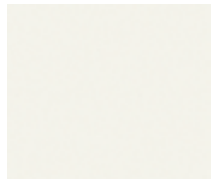
ARCTIC WHITE- **326**



GUN METALLIC - **KAD**



MAGNETIC RED - **NAJ**



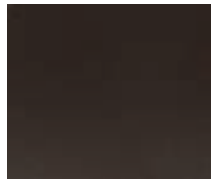
STORM WHITE - **QAB**



SOLID RED - **Z10**



SONIC BLUE - **RBE**



BRONZE - **CAP**

WHEELS



VISIA_16" WHEEL COVER



ACENTA_16" ALLOY



TEKNA_17" ALLOY

www.nissan-leaf.co.uk

24

STYLE & ACCESSORIES

TRIMS

TAILOR YOUR TRIMS



BLACK
woven type fabric*
Visia



LIGHT GREY
suede effect fabric*
Acenta



BLACK
suede effect fabric*
Acenta



BLACK
leather**
Tekna



*Bio Fabric
** Some parts of leather seats may
contain artificial leather

DIMENSIONS



A: Overall length: 4445mm
B: Wheelbase: 2700mm
C: Overall width: 1770mm
D: Overall height: 1550mm



25

COLOURS & TRIMS

TECHNICAL SPECIFICATIONS

Battery kWh	24	30
Body	5 door hatchback	
Seats	5	
Grade	Visia, Acenta, Tekna	Acenta, Tekna

WEIGHTS	Kerb weight min/max VISIA	kg	1475 / 1511	N/A
	Kerb weight min/max ACENTA	kg	1493 / 1538	1516 / 1562
	Kerb weight min/max TEKNA	kg	1512 / 1547	1535 / 1570
	Gross Vehicle Weight	kg	1 945	1 970
	Maximum payload	kg	395	
	Maximum axle load front	kg	1 030	1 040
	Maximum axle load rear	kg	960	980
	Towing capacity	kg	N/A	
	Roof load capacity	kg	N/A	

OVERALL DIMENSIONS under the vehicle technical drawing	Overall length	mm	4 445	
	Overall width with mirrors	mm	1967	
	Overall width w/o mirrors	mm	1 770	
	Overall height	mm	1550	
	Wheelbase	mm	2700	
	Overhang front	mm	960	
	Overhang rear	mm	785	
	Track front	mm	1540 / 1530	
	Track rear	mm	1535 / 1525	
	Minimum Ground Clearance	mm	160	
	Turning radius	m	5.2 / 5.4	
	Luggage capacity (VDA)	L	370 (std) / (355 BOSE)	
	Luggage capacity (until roof)	L	911.6 (floor to headliner)	
	Max with folded seats (VDA)	L	720 (to top of seats)	

PERFORMANCE	Electricity consumption 3)	Wh/km	150	150
	Autonomy (NEDC) 3)	km / miles	199 / 124	250 / 155
	CO ₂ mass emission (Combined)	g/km	0	
	Max. speed	km/h	144	144
	Acceleration 0-100 km/h	sec	11.5	
	Min. turning circle (kerb to kerb) 16"	m	10.4	
	Min. turning circle (kerb to kerb) 17"	m	10.8	
	Coefficient of drag 16"		0.29	
	Coefficient of drag 17"		0.28	

ENGINE	Engine code		EM57	
	Electric Motor Type		AC synchronous	
	Max. engine power 1)	kW (PS) / min-1	80(109) / 3008-10000rpm	
	Max. torque 1)	Nm / min-1	254 / 0-3008rpm	
	Max. RPM		10,500	
	Energy type		Electricity	

BATTERY	Type		Laminated lithium ion	
	Voltage	V	Nominal voltage ; 360 V	
	Capacity	kWh	24 kWh	30 kWh
	Number of cells		192	
	Battery charging	kW/Hr	3.6 kW/Hr	
	1hour charge to range	km	17	
	Battery charging	kWh	6.6 kW/Hr (option)	
	1hour charge to range	km	32 (option)	

CHARGER	On-board charger	kW	3.3 kW/6.6 kW (option)	
	Quick charger capacity	kW	50 (option)	
	Charging cable		EVSE 6m & Mode 3 Type 2 32A	

DRIVE TRAIN	Clutch type (AT)		Automatic	
	Transmission code		RE1F61B	
	Gear ratio		Single Speed Gear Reduction	
	Final drive ratio		8.1938	
	Driven wheels		Front	

CHASSIS	Suspension front		Independent Mac Pherson strut	
	Suspension rear		Torsion beam axle	
	Steering		Electric power assisted	
	Braking system		Electrically Driven Intelligent Brake	
	Front brake		CLZ25VZA 296 × 26t	
	Rear brake		AD11 VE+DS17 292 x 16t	
	Stability control system		ESP (standard)	
	Wheel size 16" / 17"		6.5J 16 O/S:40 / 6.5J 17 O/S:45	
	Tyre size 16" / 17"		205/55R16 / 215/50R17	

OUR PROMISE. YOUR EXPERIENCE.



When you purchase a LEAF from us, we'll look after you - for as long as you own it. **That is our Promise.**



BATTERY QUALITY GUARANTEE

YOU want the reassurance of a functional battery.

NISSAN PROMISE to replace any part of the battery causing capacity loss of below 9 bars (out of 12).



CONTINUOUS EV ROADSIDE ASSISTANCE

YOU want the peace of mind you get from our quality service to go even further.

NISSAN PROMISE to provide you with EV Roadside Assistance for free every time you service your car with us.



FREE RAPID CHARGING

YOU want to charge your car quickly.

NISSAN PROMISE free rapid-charge points at participating Nissan dealerships.



USE OF PETROL OR DIESEL CAR

YOU want to make extra-long journeys in your car.

NISSAN PROMISE to lend you a petrol or diesel car, free of charge, for up to 14 days during the first three years.



HERE FOR YOU

YOU want your problems resolved quickly.

NISSAN PROMISE to propose a resolution to any problem within two working days.



24-HOUR TEST DRIVE

YOU want to make the right decision when purchasing an electric car.

NISSAN PROMISE to give you peace of mind by letting you test drive a LEAF for a minimum of 24 hours.

28

Just call 0330 123 1231.

Please visit nissan.co.uk/promise. Terms and conditions apply.



NISSAN SERVICE PLANS

Nissan Service Plans is the best way to give your Nissan LEAF the maintenance it deserves! We'll take good care of your Nissan LEAF whilst keeping your servicing costs at a fixed price over the years. As part of the service we will change parts in accordance with Nissan official service schedules and perform check ups, providing you ultimate peace of mind. When your LEAF is due a service, Nissan will propose the most suitable service and a convenient time for you.

NISSAN CARE WARRANTY

Nissan Extended Warranty gives you the opportunity to extend the 3 years/60,000 miles warranty for a longer period or mileage. Select the contract that best suits your driving usage. In case of a repair, only Nissan approved quality parts will be used and fitted by Nissan trained technicians. For your peace of mind, 24/7 Pan European roadside assistance is included (if applicable).

NISSAN SERVICE CARE

Nissan Service Care is our comprehensive fixed price service package which gives you the following benefits:

Fixed Price service starting at just £99 for electric vehicles.

Free 1 year's Pan European Roadside Assistance worth £95

Free Courtesy car to keep you mobile during your service

Vehicle Assessment video (eVision)

Approved Quality Parts fitted By Nissan trained technicians

Free Vehicle Software updates as required We have fixed the price on not only the servicing of cars of any age, but also on most common repairs. Whether it's brake pads or windscreen wipers, you'll always know exactly where you stand.

To book a service visit Nissan-aftersales.co.uk/servicecare Terms and conditions apply.

AT NISSAN, YOU BRING OUT THE BEST IN US.

You spark our imagination. You provoke our creativity. You inspire us to change the rules and innovate. And at Nissan, innovation is not just about additions and extensions; it's about crossing the line to reinvent the status quo. It's about developing unexpected solutions to satisfy your wildest and most pragmatic desires. At Nissan, we design cars, accessories and services that break the mould - making the practical exciting and the exciting practical to offer you a more exhilarating driving experience everyday.

NISSAN LEAF OFFERS YOU:



5-YEAR /60,000 MILES WARRANTY ON ALL EV DEDICATED COMPONENTS ON 24KWH BATTERY AND 8-YEAR /100,000 MILES WARRANTY ON ALL EV DEDICATED COMPONENTS 30KWH BATTERY

5-YEAR/60,000 MILES FOR HIGH VOLTAGE COMPONENTS

3-YEAR/60,000 MILES FOR STANDARD COMPONENTS

12-YEAR ANTI-CORROSION WARRANTY

18,000 MILES SERVICE INTERVAL

Nissan LEAF lithium-ion battery state of health warranty protects against battery capacity loss (less than 9 bars out of 12) as shown on the LEAF's capacity gauge for a period of 5 Years/60,000 miles or 8 Years/100,000 miles depending on battery size.

29



Innovation
that excites

NISSAN LEAF



OFFICIAL PARTNER



[Contents](#) | [Exterior design](#) | [Interior design](#) | [Technology & Performance](#) | [Style & Accessories](#) | [Technical Specifications](#) | [Price List](#)

[Print](#) | [Close](#)

REQUEST A TEST DRIVE

STANDARD EQUIPMENT

BE A PART OF THE ELECTRIC REVOLUTION

Over 200,000 owners of the Nissan LEAF are now making the most of zero emission driving across the globe.

Launched in 2010 and now built in Britain, the 100% Electric Nissan LEAF is the world's best selling Electric Vehicle. Are you ready to go Electric?

ALL NISSAN LEAFS COME WITH:

SAFETY

- ABS with EBD and Brake Assist
- Driver, passenger, side and curtain airbags
- ESP- Electronic Stability Program
- 3 rear headrests
- Rear door child locks
- Immobiliser
- Instant Mobility System (IMS)
- Vehicle Sound for Pedestrians (VSP)
- Tyre Pressure Monitoring System (TPMS)

SAFETY

- Thatcham alarm system

AUDIO

- AM/FM/CD audio system
- AUX socket for MP3 Player
- Bluetooth® telephone integration
- USB port
- Steering wheel audio controls

TECHNOLOGY

- Regenerative braking system

CONVENIENCE

- Front and rear electric windows
- Nissan Intelligent Key with start push button
- Automatic air conditioning
- Tilt adjustable steering wheel
- Height adjustable driver seat
- Charging port illumination with Remote charging port opener
- Hill Start Assist
- ECO drive mode
- Electrically adjustable mirrors
- 3.3 kw on-board charger
- 60:40 folding rear seats
- EVSE cable - 3 Pin, 10 Amp
- 7 Pin Cable - Type 2 Mode 3
- Rapid Charge Port (Allowing 50kW DC charging)

EXTERIOR STYLING

- Halogen headlights
- Front fog lights
- Front laminated UV reducing green glass
- Rear green glass
- Chrome door handles
- Black coloured door mirrors
- Body coloured front and rear bumper

OPTIONAL EXTRAS

- Metallic Paint
- Pearlescent Paint - Storm White
- Solid Paint - Arctic White

VISIA 24kW

VISIA FEATURE ALL STANDARD EQUIPMENT

AUDIO

- 4 speakers

OPTIONS*

- 6.6kW on-board charger

INTERIOR STYLING

- Black woven bio fabric

EXTERIOR STYLING

- 16" Steel wheels



*Options available at an additional cost

ACENTA 24kWh and 30kWh

IN ADDITION TO VISIA

EXTERIOR STYLING

- Halogen headlights 'Follow Me Home' function
- Electric folding mirrors
- 16" Alloy wheels

INTERIOR STYLING

- Black/Stone suede effect bio fabric
- Driver armrest

AUDIO & TECHNOLOGY

- NissanConnect - EV Telematics System. Activate Charging, Eco-Routing, Driving Range, Preset Air Conditioning, Nearby Charging Stations, Touch Screen
- Rear view camera
- 6 speakers

COMFORT & CONVENIENCE

- B-mode (enhances regenerative braking)
- Energy efficient automatic air conditioning (digital type)
- Automatic headlights
- Rain sensing windscreen wipers
- Heat pump energy-saving cabin heating system
- Cruise control and speed limiter

OPTIONS*

- Solar cell spoiler
- 6.6kW on-board charger



*Options available at additional cost



TEKNA 24kWh and 30kWh

IN ADDITION TO ACENTA

COMFORT

- Heated front and rear seats
- Heated steering wheel
- Heated door mirrors

AUDIO & TECHNOLOGY

- BOSE® audio system with 7 speakers
- Around View Monitor with Park Assist

INTERIOR STYLING

- Black leather

EXTERIOR STYLING

- LED headlights with 'Follow Me Home' function
- 17" Alloy wheels

OPTIONS*

- Solar cell spoiler
- 6.6kW on-board charger



*Options available at additional cost
Some parts of leather seats may contain artificial leather



NISSAN LEAF

		24 kWh	30 kWh
MODEL			
Available grades		Visia, Acenta, Tekna	Acenta, Tekna
Seating capacity		5	
WEIGHTS			
Kerb weight min/max Visia	kg	1475 / 1511	
Kerb weight min/max Acenta	kg	1493 / 1538	1516 / 1562
Kerb weight min/max Tekna	kg	1512 / 1547	1535 / 1570
Gross vehicle weight	kg	1,945	1,970
Maximum payload	kg	395	395
Maximum axle load front	kg	1,030	1,040
Maximum axle load rear	kg	960	980
Towing capacity	kg	N/A	N/A
Roof load capacity	kg	N/A	N/A
OVERALL DIMENSIONS			
Overall length	mm	4,445	4,445
Overall width with mirrors	mm	1967	1967
Overall width without mirrors	mm	1,770	1,770
Overall height	mm	1550	1550
Wheelbase	mm	2700	2700
Overhang front	mm	960	960
Overhang rear	mm	785	785
Track front	mm	1540 / 1530	1540 / 1530
Track rear	mm	1535 / 1525	1535 / 1525
Minimum ground clearance	mm	160	160
Turning radius	m	5.2 / 5.4	5.2 / 5.4
Luggage capacity (VDA)	L	370 (std) / (355 BOSE)	370 (std) / (355 BOSE)
Luggage capacity (until roof)	L	911.6 (floor to headliner)	911.6 (floor to headliner)
Max with folded seats (VDA)	L	720 (to top of seats)	720 (to top of seats)
ENGINE			
Engine Code		EM57	EM57
Electric Motor Type		AC synchronous	AC synchronous
Max. engine power 1)	kW(PS)/min-1	80(109) / 3008-10000rpm	80(109) / 3008-10000rpm
Max. torque 1)	Nm/min-1	254 / 0-3008rpm	254 / 0-3008rpm
Max RPM		10,500	10,500
Energy type		Electricity	Electricity
CHARGER			
On-board charger	kW	3.6kW, 6.6kW (option)	3.6kW/6.6kW (option)
Quick charger capacity	kW	50 (option)	50
Charging Cable		EVSE cable - 3 Pin, 10 Amp and 7 Pin Cable Type 2 Mode 3	EVSE cable - 3 Pin, 10 Amp and 7 Pin Cable Type 2 Mode 3

		24kWh	30kWh
MODEL			
Available grades		Visia, Acenta, Tekna	Acenta, Tekna
BATTERY			
Type		Laminated lithium ion	Laminated lithium ion
Voltage	V	Nominal voltage ; 360 V	Nominal voltage ; 360 V
Capacity	kWh	24 kWh	30 kWh
Number of cells		192	192
Battery Charging	Kw/hr	3.6kW/Hr	3.6kW/Hr
1hour charge to range	km	17	17
Battery Charging	Kw/hr	6.6kW/Hr (option)	6.6kW/Hr (option)
1hour charge to range	km	32 (option)	32 (option)
Mass (whit battery heater)	kg	275	296
PERFORMANCE			
Electricity consumption ³⁾	Wh/km	150	150
Autonomy (NEDC) ³⁾	km / miles	199 / 124	250 / 155
CO2 mass emission (Combined)	g/km	0	0
Max. speed	mph	16" - 87 mph 17" - 89 mph	16" - 87 mph 17" - 89 mph
Acceleration (0 --- 62 mph)	sec	11.5	11.5
Min. turning circle(kerb to kerb) 16"	m	10.4	10.4
Min. turning circle(kerb to kerb) 17"	m	10.8	10.8
Coefficient of drag 16"		0.29	0.29
Coefficient of drag 17"		0.28	0.28
CHASSIS			
Suspension Front		Independent Mac Pherson strut	Independent Mac Pherson strut
Suspension Rear		Torsion beam axle	Torsion beam axle
Steering		Electric power assisted	Electric power assisted
Braking System		Electrically Driven Intelligent Brake	Electrically Driven Intelligent Brake
Front Brake		CLZ25VZA 296 x 26t	CLZ25VZA 296 x 26t
Rear Brake		AD11 VE+DS17 292 x 16t	AD11 VE+DS17 292 x 16t
Stability control system		ESP (standard)	ESP (standard)
Wheel size 16" / 17"		6.5J 16 O/S:40 / 6.5J 17 O/S:45	6.5J 17 O/S:45
Tyre size 16" / 17"		205/55R16 / 215/50R17	215/50 R17
DRIVE TRAIN			
Transmission code		RE1F61B	RE1F61B
Gear ratio		Single Speed Gear Reduction	Single Speed Gear Reduction
Final drive ratio		8.1938	8.1938
Driven wheels		Front	Front

1) In accordance with 1999/99/EC. 2) Figures in accordance with EC Directive. Kerb weight condition is without driver and including coolant, oils, fuel, spare wheel and tools. Pay load will be reduced depending on the options and/or accessories installed. 3) In accordance with UN/ECE Regulation 101 4) Figures shown are with driver + 4 passengers and luggages and max. kerb weight.

REQUEST A TEST DRIVE

PRICE LIST

24kW MY16								
Doorplan	Grade	Engine	Transmission	Basic Price £	VAT £	Total Retail £	On The Road Price £	On The Road Price after Government Incentive* £
5 door	VISIA	80kW AC Electric Motor	Single Reduction Gear (Auto)	21,645.83	4,329.17	25,975	26,030	21,530
	ACENTA	80kW AC Electric Motor	Single Reduction Gear (Auto)	23,395.83	4,679.17	28,075	28,130	23,630
	TEKNA	80kW AC Electric Motor	Single Reduction Gear (Auto)	25,062.50	5,012.50	30,075	30,130	25,630

30kW MY16								
Doorplan	Grade	Engine	Transmission	Basic Price	VAT	Total Retail	On The Road Price	On The Road Price after Government Incentive*
5 door	ACENTA	80kW AC Electric Motor	Single Reduction Gear (Auto)	24,729.17	4,945.83	29,675	29,730	25,230
	TEKNA	80kW AC Electric Motor	Single Reduction Gear (Auto)	26,395.83	5,279.17	31,675	31,730	27,230

Basic and Total Retail includes delivery to the dealership and number plates. On the road price includes £55 government first registration fee.
* Government applied Plug-in Car Grant (referred to as 'Government Incentive') of 35% up to a maximum of £4,500 can be applied to LEAF sales.*



OPTIONS

	VISIA	ACENTA	TEKNA	BASIC £	VAT £	TOTAL £
Metallic paint	<input type="radio"/>	<input type="radio"/>	<input type="radio"/>	458.33	91.67	550
Pearlescent paint	<input type="radio"/>	<input type="radio"/>	<input type="radio"/>	620.83	124.17	745
Solid Paint - Arctic White paint	<input type="radio"/>	<input type="radio"/>	<input type="radio"/>	208.33	41.67	250
Rear roof spoiler with solar cells		<input type="radio"/>	<input type="radio"/>	250.00	50.00	300
Rapid charge Port (allowing 50kW DC charging)	<input checked="" type="radio"/>	<input checked="" type="radio"/>	<input checked="" type="radio"/>	-	-	-
6.6kW on board charger* (allowing home and public charging at 32AMP)	<input type="radio"/>	<input type="radio"/>	<input type="radio"/>	958.33	191.67	1150
16" Alloy wheels x4**	<input type="checkbox"/>	<input type="checkbox"/>		693.32	138.63	832
Dog guard	<input type="checkbox"/>	<input type="checkbox"/>	<input type="checkbox"/>	190.00	38.00	228
Tailgate entry guard	<input type="checkbox"/>	<input type="checkbox"/>	<input type="checkbox"/>	86.67	17.33	104
Chrome trunk finisher	<input type="checkbox"/>	<input type="checkbox"/>	<input type="checkbox"/>	129.17	25.83	155
Rear parking sensors	<input type="checkbox"/>	<input type="checkbox"/>	<input type="checkbox"/>	314.17	62.83	377
Hologram entry guard (set of 2)	<input type="checkbox"/>	<input type="checkbox"/>	<input type="checkbox"/>	146.67	29.33	176
Seat cover	<input type="checkbox"/>	<input type="checkbox"/>	<input type="checkbox"/>	250.00	50.00	300
Coloured mirror caps*	<input checked="" type="checkbox"/>	<input type="checkbox"/>	<input type="checkbox"/>	137.50	27.50	165

Dealer fit option prices include fitting but are only a guide. Please check with your local Nissan dealer for exact prices.
*Available in red, black, white, grey, purple, orange, carbon look, chrome. (Carbon look and chrome prices vary).
**Price excludes tyres

Optional - ☐ Standard - ☒ Optional Dealer Fit - ☐

OPTION PACKS

	VISIA	ACENTA	TEKNA	BASIC £	VAT £	TOTAL £
Protection Pack (velour carpet mats, front & rear mudguards & trunk mat)	<input type="checkbox"/>	<input type="checkbox"/>	<input type="checkbox"/>	174.17	34.83	209
Design Pack (chrome/coloured mirror caps, chrome strip door sills)	<input type="checkbox"/>	<input type="checkbox"/>	<input type="checkbox"/>	249.17	49.83	299

Dealer fit option prices include fitting but are only a guide. Please check with your local Nissan dealer for exact prices

Optional - ☐ Standard - ☒ Optional Dealer Fit - ☐

ALLOYS



16" Steel wheels
VISIA



16" Alloy wheels
ACENTA



17" Alloy wheels
TEKNA



[Contents](#) | [Exterior design](#) | [Interior design](#) | [Technology & Performance](#) | [Style & Accessories](#) | [Technical Specifications](#) | [Price List](#)

[Print](#) | [Close](#)

[Leaf Model and option prices](#) | [CO2 emissions](#)

[REQUEST A TEST DRIVE](#)

LEAF 24kW MY14 & MY15

Doorplan	Grade	Engine	Transmission	Basic Price	VAT	Total Retail	On The Road Price	On The Road Price after Government Incentive*
5 door	VISIA	80kW AC Electric Motor	Single Reduction Gear (Auto)	21,645.83	4,329.17	25,975	26,030	21,530
	ACENTA	80kW AC Electric Motor	Single Reduction Gear (Auto)	23,395.83	4,679.17	28,075	28,130	23,630
	TEKNA	80kW AC Electric Motor	Single Reduction Gear (Auto)	25,062.50	5,012.50	30,075	30,130	25,630

LEAF 30kW MY16

Doorplan	Grade	Engine	Transmission	Basic Price	VAT	Total Retail	On The Road Price	On The Road Price after Government Incentive*
5 door	ACENTA	80kW AC Electric Motor	Single Reduction Gear (Auto)	24,729.17	4,945.83	29,675	29,730	25,230
	TEKNA	80kW AC Electric Motor	Single Reduction Gear (Auto)	26,395.83	5,279.17	31,675	31,730	27,230

Basic and Total Retail includes delivery to the dealership and number plates. On the road price includes £55 government first registration fee.
* Government applied Plug-in Car Grant (referred to as 'Government Incentive') of 35% up to a maximum of £4,500 can be applied to LEAF sales.*

LEAF OPTIONS

	VISIA	VISIA+	ACENTA	TEKNA	Basic	VAT	Total
Metallic paint	○	○	○	○	458.33	91.67	550
Pearlescent paint	○	○	○	○	620.83	124.17	745
Arctic White paint	○	○	○	○	208.33	41.67	250
Rear roof spoiler with solar cells			○	○	250.00	50.00	300
Rapid Charge Port (allowing 50kW DC charging)	●	●	●	●	-	-	-
NissanConnect with rear view camera		●			-	-	-
6.6 kW on board charger* (allowing home and public charging at 32AMP)	○	○	○	○	958.33	191.67	1150
Protection Pack (Velour carpet mats, Mudguards - front and rear & Trunk Mat (with or without BOSE))	□	□	□	□	174.17	34.83	209
Design Pack Chrome/coloured mirror caps, Chrome strip door sills	□	□	□	□	249.17	49.83	299
16" Alloy Wheel x 4**	□	□	□		693.32	138.63	832
Dog Guard	□	□	□	□	190.00	38.00	228
Tailgate entry guard	□	□	□	□	86.67	17.33	104
Chrome trunk finisher	□	□	□	□	129.17	25.83	155
Rear parking sensors	□	□	□	□	314.17	62.83	377
Hologram entry guard (set of 2)	□	□	□	□	146.67	29.33	176
Seat covers	□	□	□	□	250.00	50.00	300
Coloured mirror caps*	□	□	□	□	137.50	27.50	165

Optional - ○ Standard - ● Optional Dealer Fit - □

Dealer fit option prices include fitting but are only a guide. Please check with your local Nissan dealer for exact prices.

*Available in: Red, Black, White, Grey, Purple, Orange, Carbon Look, Chrome (Carbon Look + Chrome prices vary)

** Price excludes tyres

CO2 MASS EMISSIONS AND VEHICLE EXCISE DUTY

Vehicle	Engine	Transmission	Body Style	Emission Level	CO ₂ Mass Emissions g/km		12 months VED	
					≤ 17" Alloys	≥18" Alloys	≤ 17" Alloys	≥18" Alloys
LEAF	80kW AC Electric Motor	Single Reduction Gear (Auto)	5 door	-	0		£0	



NISSAN MOTOR (GB) LIMITED

The Rivers Office Park
Denham Way
Maple Cross
Rickmansworth
Hertfordshire
WD3 9YS

Visit our website at: www.nissan.co.uk

Part Number: 99999 54238

Prices effective from 1st April 2016 unless otherwise stated

Dealer stamp:

[Contents](#) | [Exterior design](#) | [Interior design](#) | [Technology & Performance](#) | [Style & Accessories](#) | [Technical Specifications](#) | [Price List](#)

[Print](#) | [Close](#)

[REQUEST A TEST DRIVE](#)